

Corona Virus Disease (COVID-19) Situational Report

Report No.182 Date of Issue 28th September, 2020, 3pm

HIGHLIGHTS

- This is the **27th week** of the COVID-19 outbreak in Sierra Leone (Epi Week 40)
- As of **28th September 2020**, there were **2,215 confirmed** COVID-19 cases, **72 deaths** and **1681 recoveries** in Sierra Leone
- There were **0 new COVID-19 cases**, **0 recoveries** and **0 death** reported in the last 24 hours.
- There are currently **462 active cases** in treatment/isolation centres
- **11 COVID 19 tests** were conducted in the last 24 hours in three laboratories. Positivity rate was **0.0 %**.
- Total **COVID 19 tests** conducted to date is **40,309(5.26/1000)**
- Overall Case Fatality Rate (CFR) is **3.3%**
- Current bed occupancy in COVID 19 community treatment and care centres (CTC/CCC) nationally is **5.8. %**
- Nationwide cumulative discharges from quarantine homes is **11,221**
- **230 (10.4%)** COVID-19 cases are among **health workers**
- What is the trend of COVID-19 alerts notified via 117 in Sierra Leone? -see fig 2

New	Confirmed	0
	Recoveries	0
	Deaths	0
Cumulative	Confirmed	2,215
	Active	462
	Recoveries	1681
	Deaths	72
Case Fatality Rate (%)		3.3%

Summary of COVID-19 Cases in Sierra Leone as at 28th September 2020						
District	Confirmed Cases			Deaths		
	New	Cumulative	Proportion of Total	New Deaths	Cumulative	Days Since Last
	Confirmed					
Western Area Urban	0	1059	47.8%	0	59	1
Western Area Rural	0	261	11.8%	0	1	1
Port Loko	0	105	4.7%	0	0	6
Kenema	0	125	5.6%	0	4	12
Tonkolili	0	82	3.7%	0	0	2
Bombali	0	49	2.2%	0	4	44
Bonthe	0	87	3.9%	0	0	52
Bo	0	108	4.9%	0	2	29
Koinadugu	0	36	1.6%	0	0	62
Falaba	0	11	0.5%	0	0	50
Kailahun	0	79	3.6%	0	0	6
Moyamba	0	58	2.6%	0	0	37
Pujehun	0	29	1.3%	0	0	34
Kono	0	75	3.4%	0	2	28
Kambia	0	30	1.4%	0	0	83
Karene	0	11	0.5%	0	0	66
Incoming passengers	0	10	0.5%	0	0	1
Total	0	2215	100.0%	0	72	-

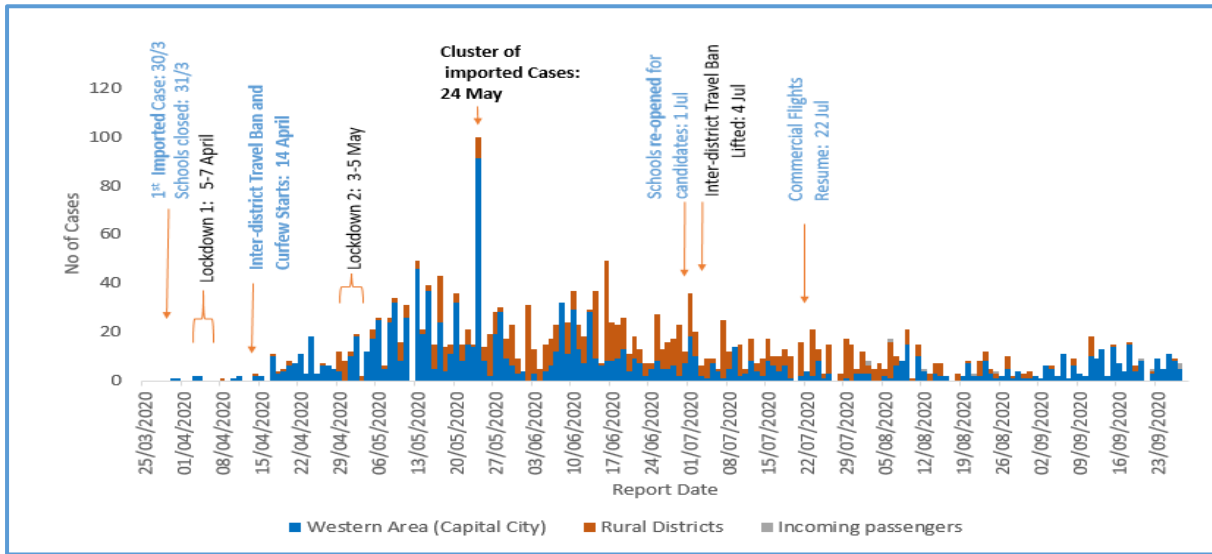


Figure 1: Daily COVID-19 Cases in Sierra Leone as of 28th September 2020; Western Area includes Western Urban and Western Rural Districts; Rural Districts includes all other 14 Districts

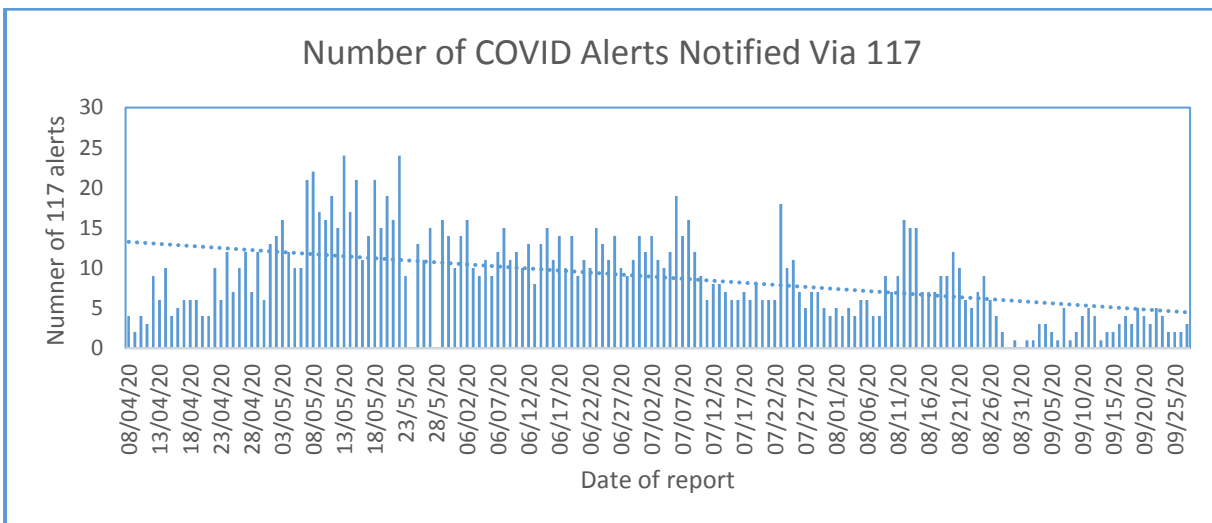
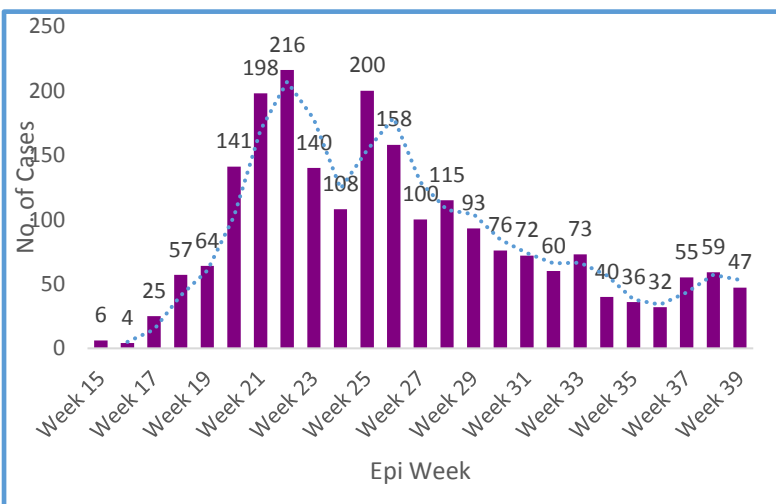


Figure 2: Number of COVID-19 alerts notified via 117 28 Sep 2020

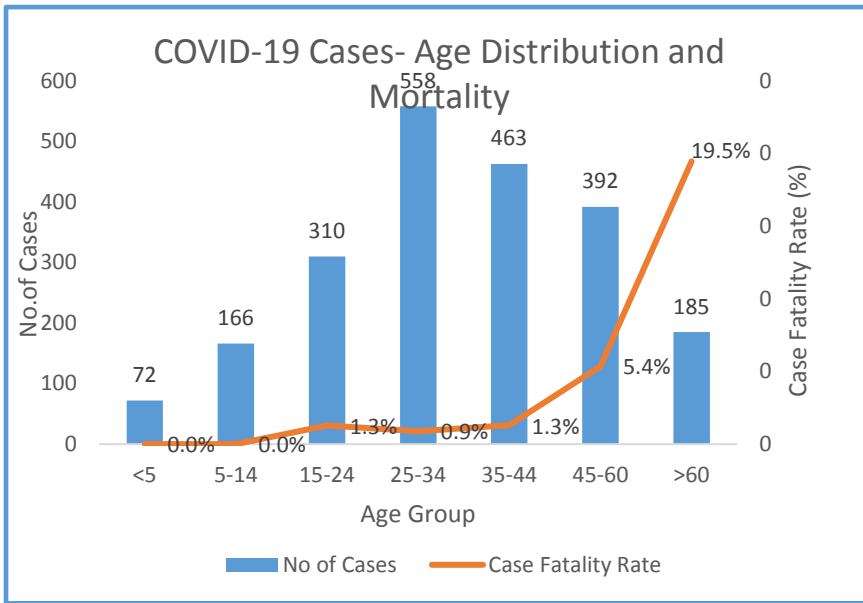
Source: COVID-19 master dataset



- Cases last week (Epi week 39) reduced by 20 % compared to week 38
- The number of COVID-19 alerts notified via 117 has been declining since start of the epidemic. The average number of daily alerts in the past 14 days was three (3). (fig 2)
- Average daily alerts from 117 in Sierra Leone in the last 7 days were 3

Cases reported over the last 7 days

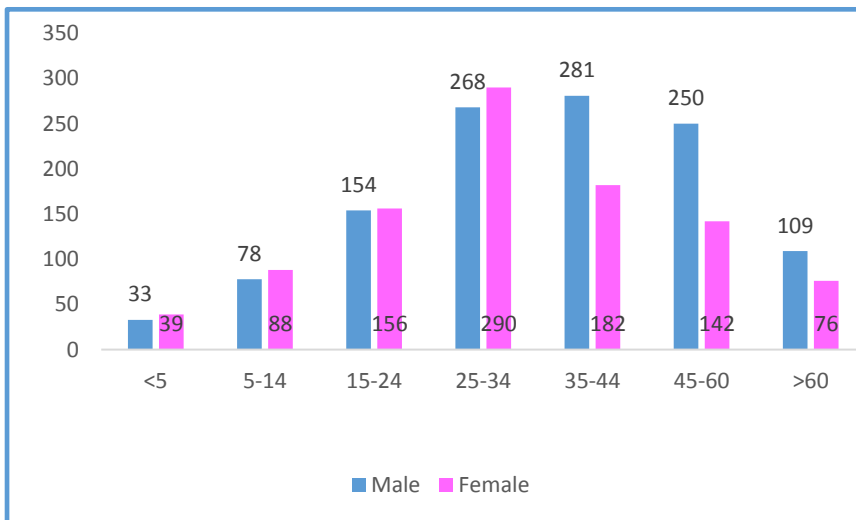
- **47** cases have been reported over the last 7 days
- The seven day moving average is 6.7



Mortality

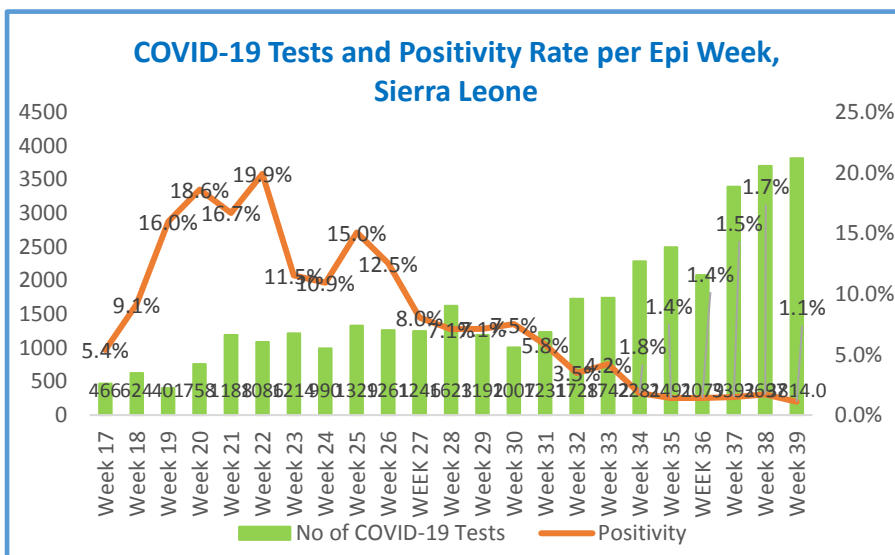

- **67%** of deaths are males
- **33%** of deaths are females
- **Average age** of COVID-19 related deaths= **58 years**
- Overall **CFR**=3.3%
- CFR among **males**=4.2%
- CFR among **Females**=2.4%
- CFR among cases **>60 years**=**19.5%**
- CFR among **45-60 years** is **5.4%**

Figure 4: Age Distribution and Age Specific CFR of COVID 19 cases



- **Males**= 54.1 %
- **Females** =45.9%
- **Median Age** all Cases= **33 years** (range <1-98 years)
- **Median age females** = **30 years**
- **Median Age Males**= **35 years**
- **More males** affected after **35 yrs**
- Cases **< 45 years** =73%

Figure 5: Age-Sex Distribution of COVID 19 cases

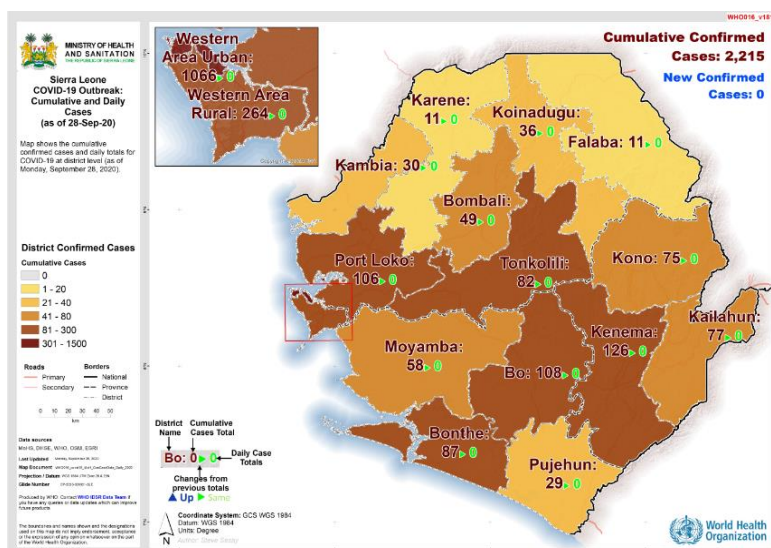



40,309
Total COVID-19

5.26
Tests/1000 population

Figure 6: COVID 19 Test and Positivity Rate per Epi Week

- Tests conducted have increased gradually in the last 4 weeks.
- Number of tests conducted last week (**Epi week 39**) **increased by 3%** compared to Week 38, while Positivity rate reduced from 1.7% to 1.1%
- Average number of daily tests in the last 7 days is **530**
- Cumulative number of COVID-19 tests conducted is **40,309 (5.26 tests/1000 population)**
- Average positivity rate of **ALL** samples tested for COVID-19 is **5.5 %**
- **5 out of 16 districts** reported COVID-19 cases over the last 7 days
- National attack rate is **28.9 per 100,000** people
- Districts with highest COVID-19 attack rate: Western Area Urban, Western Area Rural, Bonthe, Bo, Kenema and Port Loko
- **97%** contacts currently under follow up were reached by contact tracers in the last 24 hours
- **21(6%)** of persons under quarantine are under **Government Quarantine**



District	Total COVID-19 Cases	Cases/100,000 Population
Western Area Urban	1059	88.2
Western Area Rural	261	51.3
Bo	108	29.6
Bonthe	87	38.8
Kenema	125	18.6
Kono	75	13.2
Tonkolili	82	14.3
Moyamba	58	15.9
Kambia	30	7.6
Bombali	49	10.2
Port Loko	105	17.0
Kailahun	79	12.8
Koinadugu	36	13.1
Falaba	11	5.7
Pujehun	29	7.3
Karene	11	5.2
Incoming passengers	10	
Total	2215	28.9

Figure 7: Geographic distribution and attack rate of COVID 19 cases in Sierra Leone as of 28th/09/2020

Technical Areas	Variable	No
Contact Tracing	Cumulative No. of Contacts Listed	11592
	Total No. of contacts currently under monitoring	350
	Total No. of contacts reached in the last 24 hours	340 (93%)
Quarantine	Total No. Currently under quarantine	350
	Self-Quarantine	329 (94 %)
	Institutional Quarantine	21 (6. %)
Laboratory Testing	Laboratory tests done in last 24 hours	11
	No of positive tests in last 24 hours (%)	0 (0.0%)
	Cumulative number of tests	40,309
Event Based Surveillance (Last 24 hrs.)	Total Alerts Received through 117 System	81
	No. of COVID related alerts	3
	No. of COVID related alerts investigated	3